

Pillars and clamping devices

Magnetic pillars for your own twist drilling machine, MobilCLAMP and drill stands.

Build your own magnetic drilling machine! BDS provides new options for the subject of clamping mechanisms for working with commercially available manual drilling machines and for magnetic core drilling machines.



Magnetic pillar



Industrial pillar



MobilCLAMP – mobile working with magnetic core drilling machines

Magnetic pillars for hand drills

Using this practical magnetic drilling stand, you can convert your manual drilling machine into a magnetic drilling machine.

The magnetic drilling stand is suitable for commercially available manual drilling machines with 43 mm collar diameter.

Thus, the powerful magnet facilitates working horizontally and doing overhead work safely. (For these applications, a safety chain must be used additionally.) The carriage has a working stroke of 180 mm.

Industrial pillar for twist drilling machines

Industrial drilling stand for commercially available manual drilling machines with 43 mm collar diameter.

Safe, secure and stable by a cast base plate and carriage with a working stroke of 180 mm.

Optionally with a drilling machine vice, 100 mm jaw width. Screws for T-grooves are also available for securing.

MobilCLAMP for BDS magnetic core drilling machines



Using the portable clamping mechanism, MobilCLAMP, you can supplement the application options of a magnetic core drilling machine onsite and in the workshop. The magnetic core drilling machine is placed on the desired surface for this purpose

and switched on. Components can be clamped securely in the quick-action clamping vice and you have a flexible table-top drilling machine in no time.

Optionally available: stable frame for MobilCLAMP clamping device.



MAGNETIC PILLARS

ORDER NO.

MBS 300

For commercially available hand drills with a collar diameter of 43 mm, stroke 180 mm.

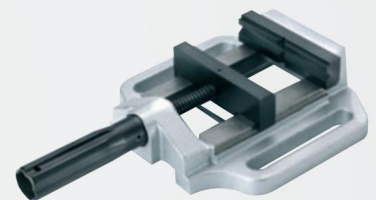


INDUSTRIAL PILLAR

ORDER NO.

ZBS 100

For commercially available hand drills with a collar diameter of 43 mm, stroke 180 mm. Vice and screws are not included in the delivery.



PRISM VICE

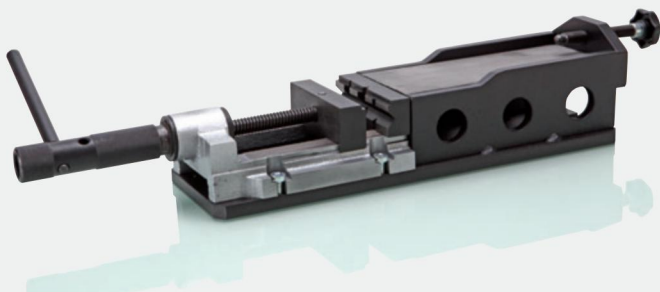
ORDER NO.

ZST 300 Prism vice

ZTN 100 Screw for T slots

ZSM 100 Hexagon nut

Jaw width: 100 mm, clamping range: 100 mm



CLAMPING DEVICE MobilCLAMP

ORDER NO.

JAW WIDTH

ZMC 180

100 cm, 80 mm clamping width

ZMC 300

Base frame for clamping device

Mechanical clamping device for magnetic core drilling machines.



MAGNETIC CLAMPING DEVICE MagnetCLAMP

ORDER NO.

CLAMPING RANGE

ZMS 500/230V

100 – 800 mm

ZMS 500/120V

100 – 800 mm

Magnetic clamping device, the versatile mounting aid.